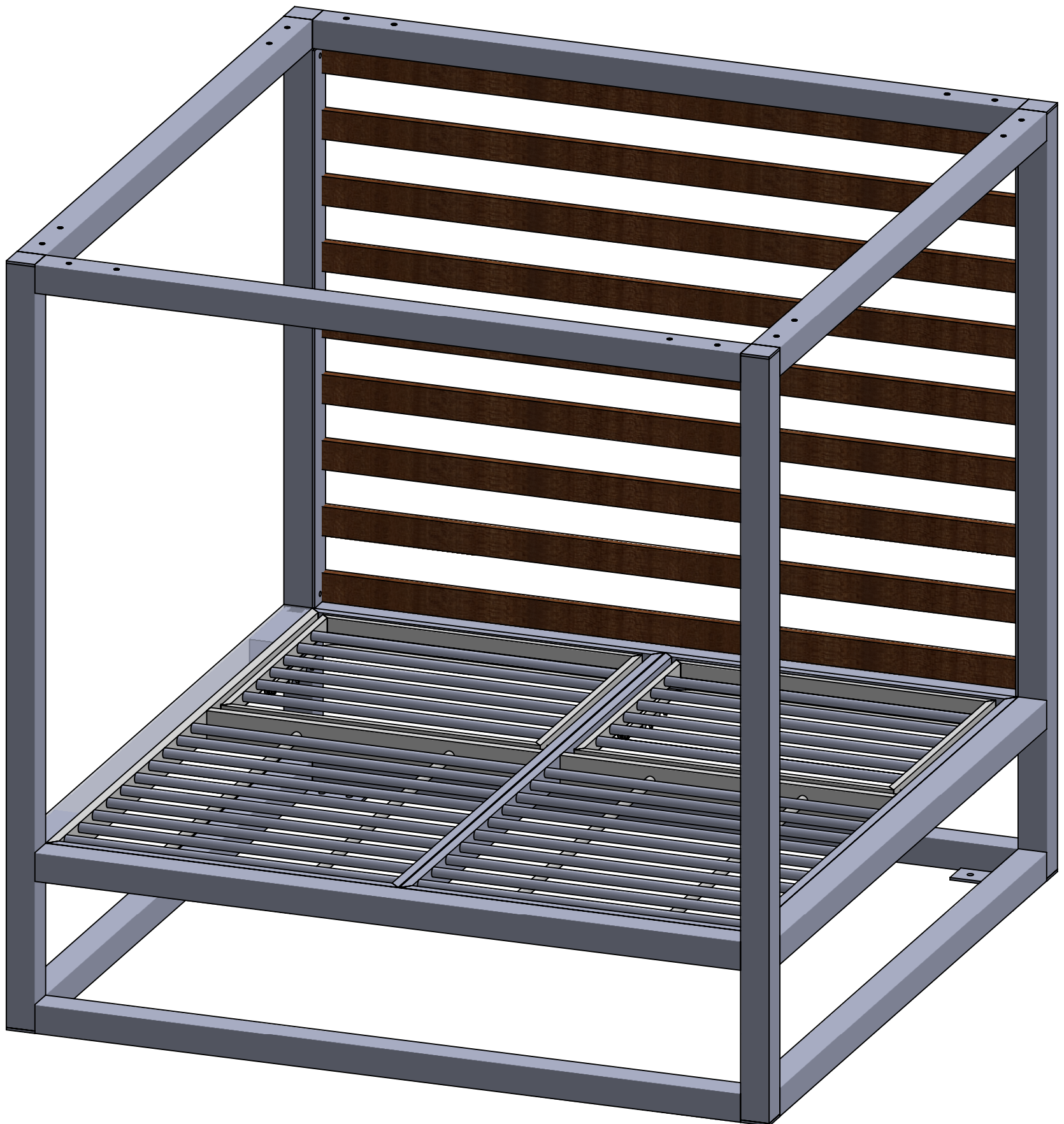




INSTALLATION MANUAL BREEZE DAYBED (SF-3406-202 IM)

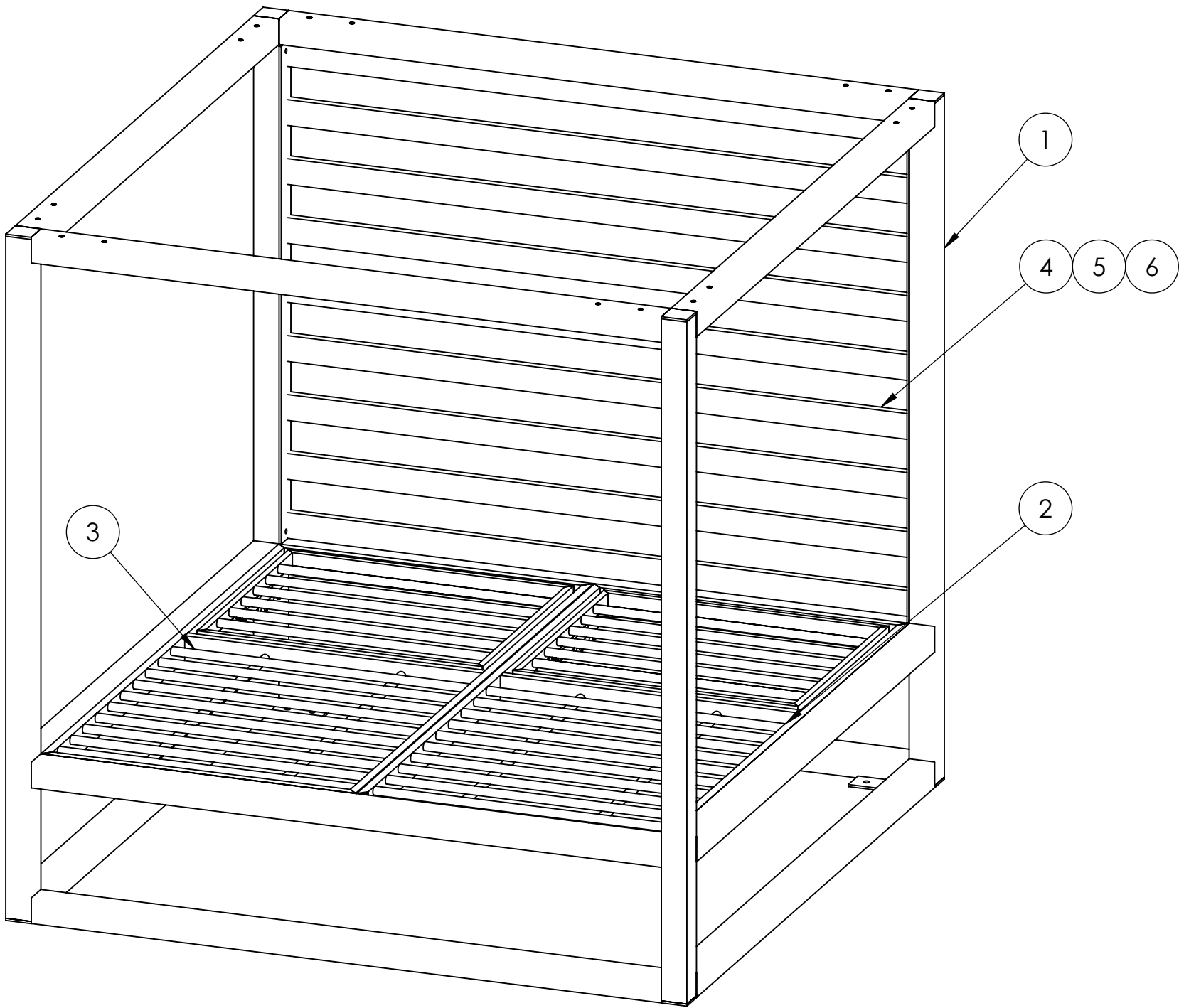


NOTES
- GROUND ANCHOR BOLTS NOT INCLUDED.

INSTALLATION MANUAL

BREEZE DAYBED

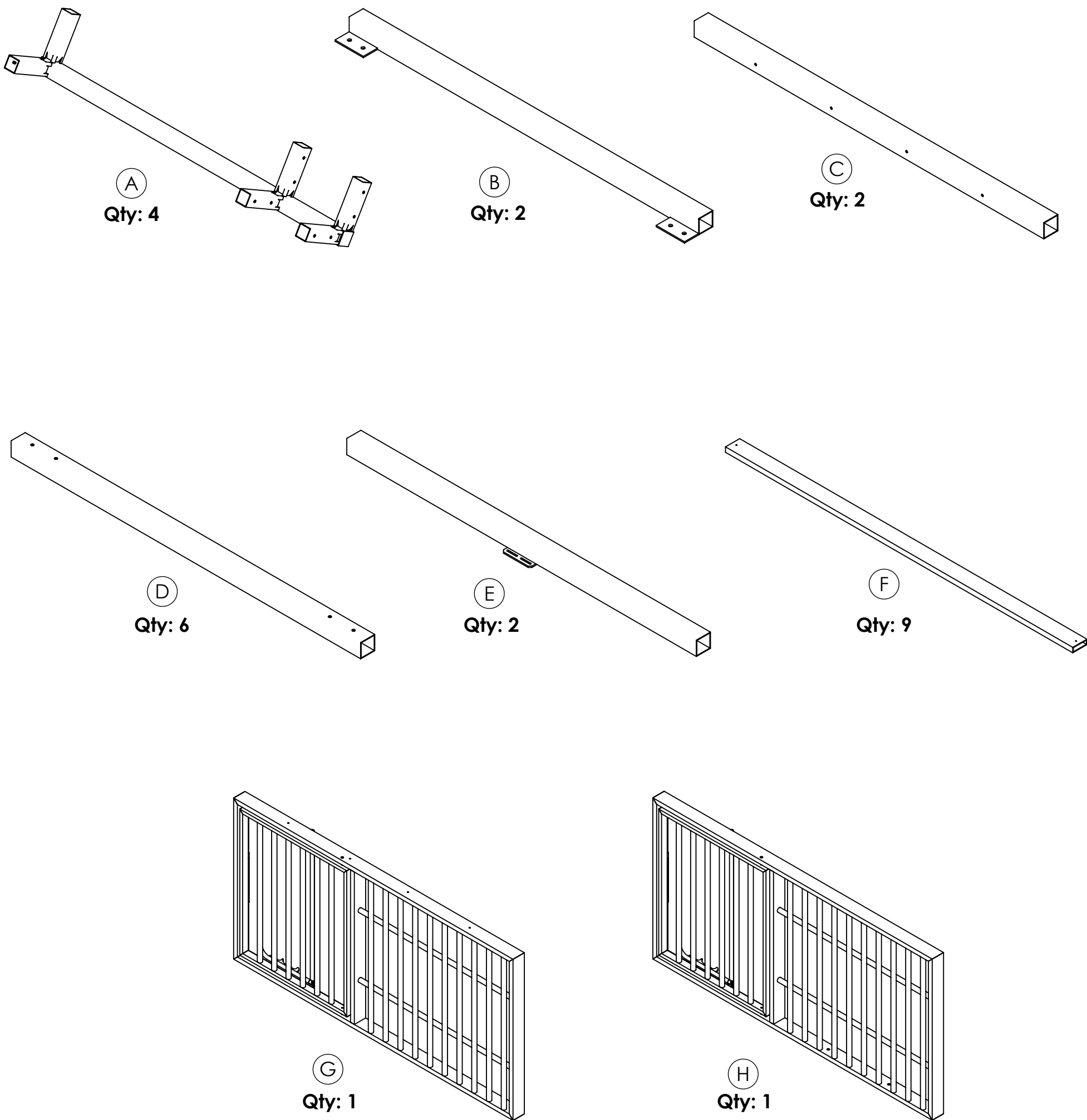
(SF-3406-202 IM)



| ITEM NO. | PART NUMBER | DESCRIPTION | QTY. |
|----------|-----------------|-----------------------|------|
| 1 | SF-3406-202-A01 | BREEZE DAYBED FRAME | 1 |
| 2 | SF-3406-202-A03 | BREEZE RIGHT BED | 1 |
| 3 | SF-3406-202-A04 | BREEZE LEFT BED | 1 |
| 4 | SF-3406-202-P24 | BRACKET | 9 |
| 5 | SF-3406-202-P23 | BRACKET | 18 |
| 6 | SF-3406-202-P22 | LATERAL PLATE | 2 |
| 7 | HARDWARE | FHCS 1/4-20 X 1" LG | 48 |
| 8 | HARDWARE | FLAT WASHER ID 1/4" | 4 |
| 9 | HARDWARE | BHCS 1/4-20 X 3/4" LG | 4 |

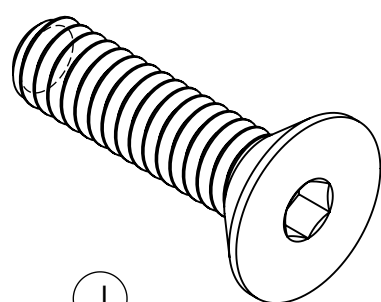


**INSTALLATION MANUAL
BREEZE DAYBED
(SF-3406-202 IM)**

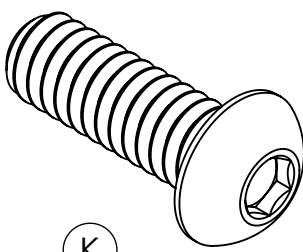




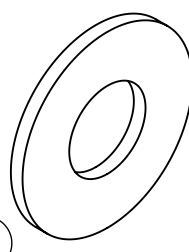
**INSTALLATION MANUAL
BREEZE DAYBED
(SF-3406-202 IM)**



ⓐ
Qty: 40



ⓑ
Qty: 4



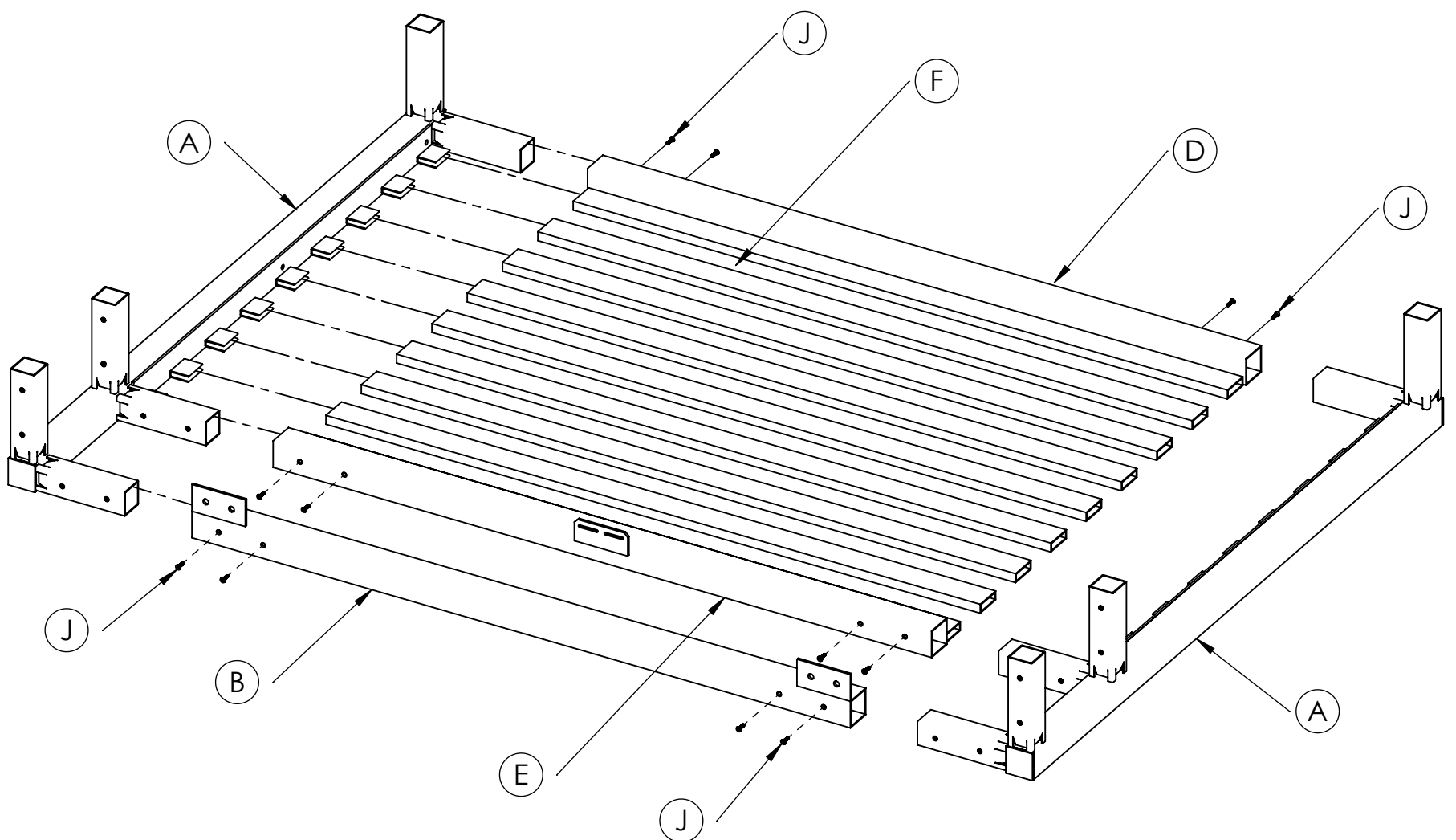
ⓒ
Qty: 4



INSTALLATION MANUAL

BREEZE DAYBED

(SF-3406-202 IM)



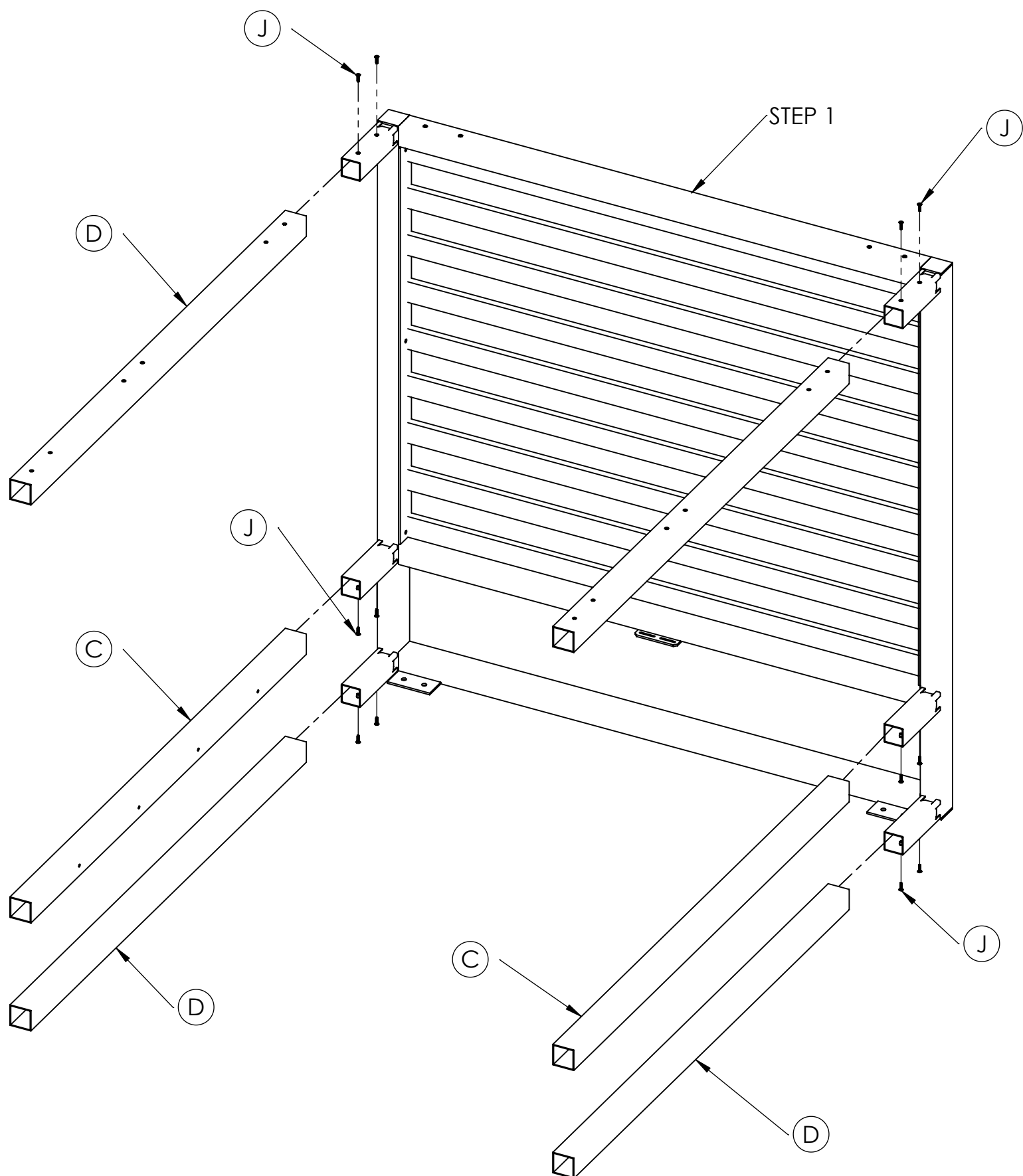
STEP 1

- CLEAN WORK AREA MAKING SURE FLOOR IS FREE OF DIRT AND DABRIS.
- PLACE LARGE CLOTH ON FLOOR TO PROTECT DAYBED FROM SCRATCHES.
- LAYOUT PARTS AS SHOWN, SLID (X) INTO OPENING ON OPPOSITE SIDE AND SECURE WITH FLAT HEAD SCREW 1/4"-20 X 1" AND TIGHTEN. (AS SHOWN)
- STAND UP RIGHT.

INSTALLATION MANUAL

BREEZE DAYBED

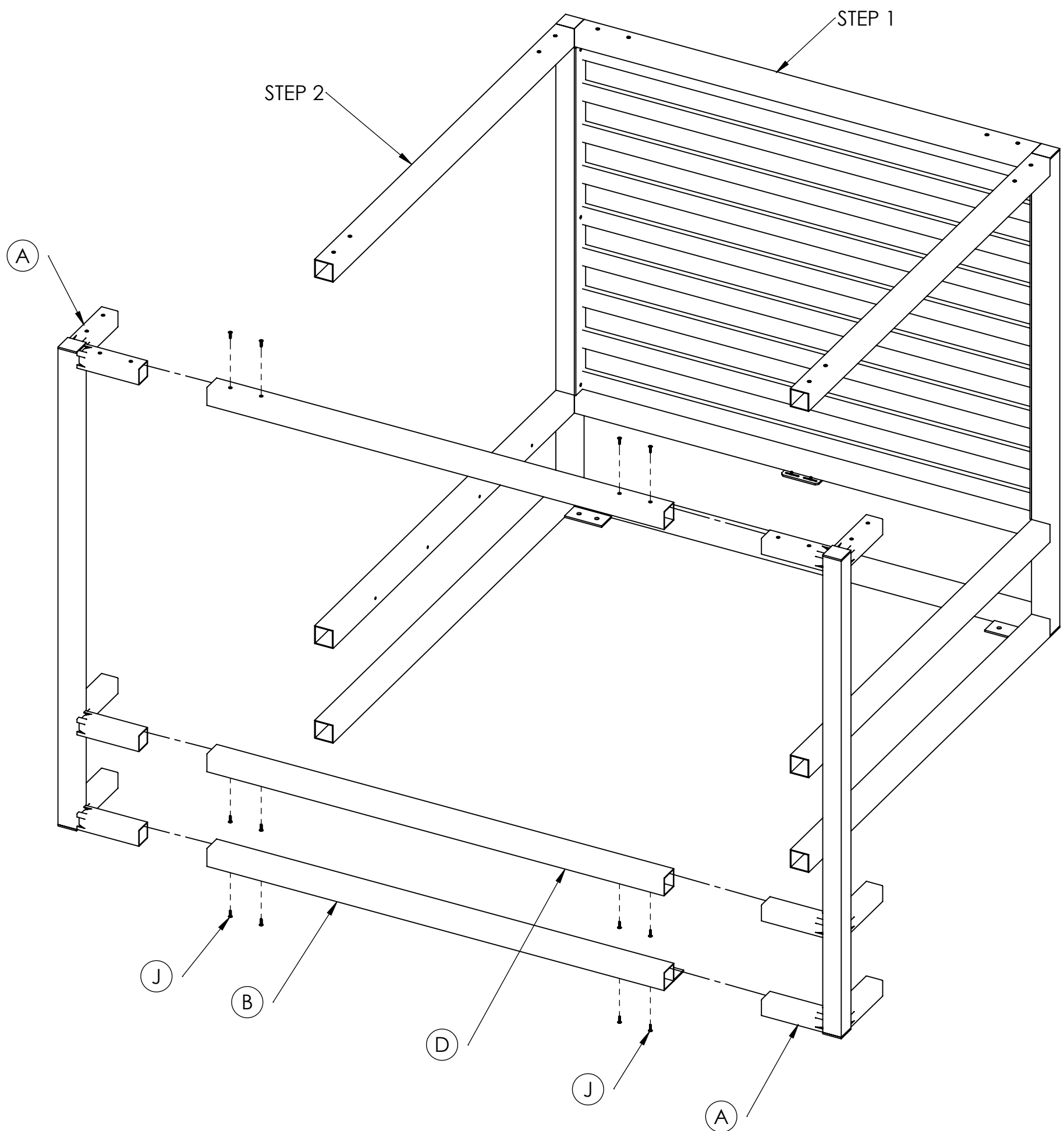
(SF-3406-202 IM)



STEP 2

-ATTACH SIDE REALS (X) WITH FLAT HEAD SCREW 1/4"-20 X 1" AND TIGHTEN. (AS SHOWN)

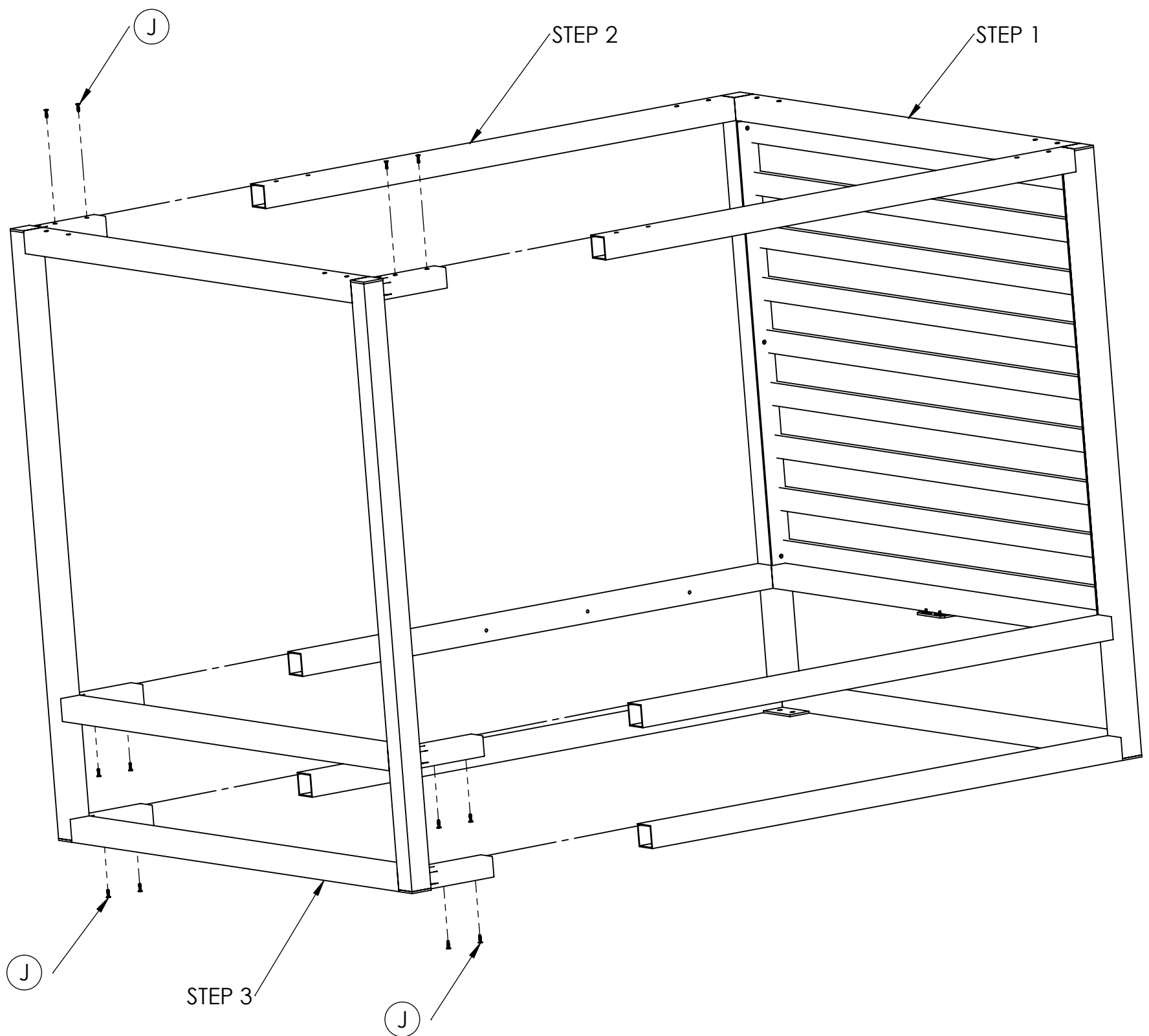
INSTALLATION MANUAL BREEZE DAYBED (SF-3406-202 IM)



STEP 3

- REPEAT STEP 1 FOR FRONT WALL ASSEMBLY
- ATTACH WITH FLAT HEAD SCREW 1/4"-20 X 1" AND TIGHTEN. (AS SHOWN)

INSTALLATION MANUAL BREEZE DAYBED (SF-3406-202 IM)

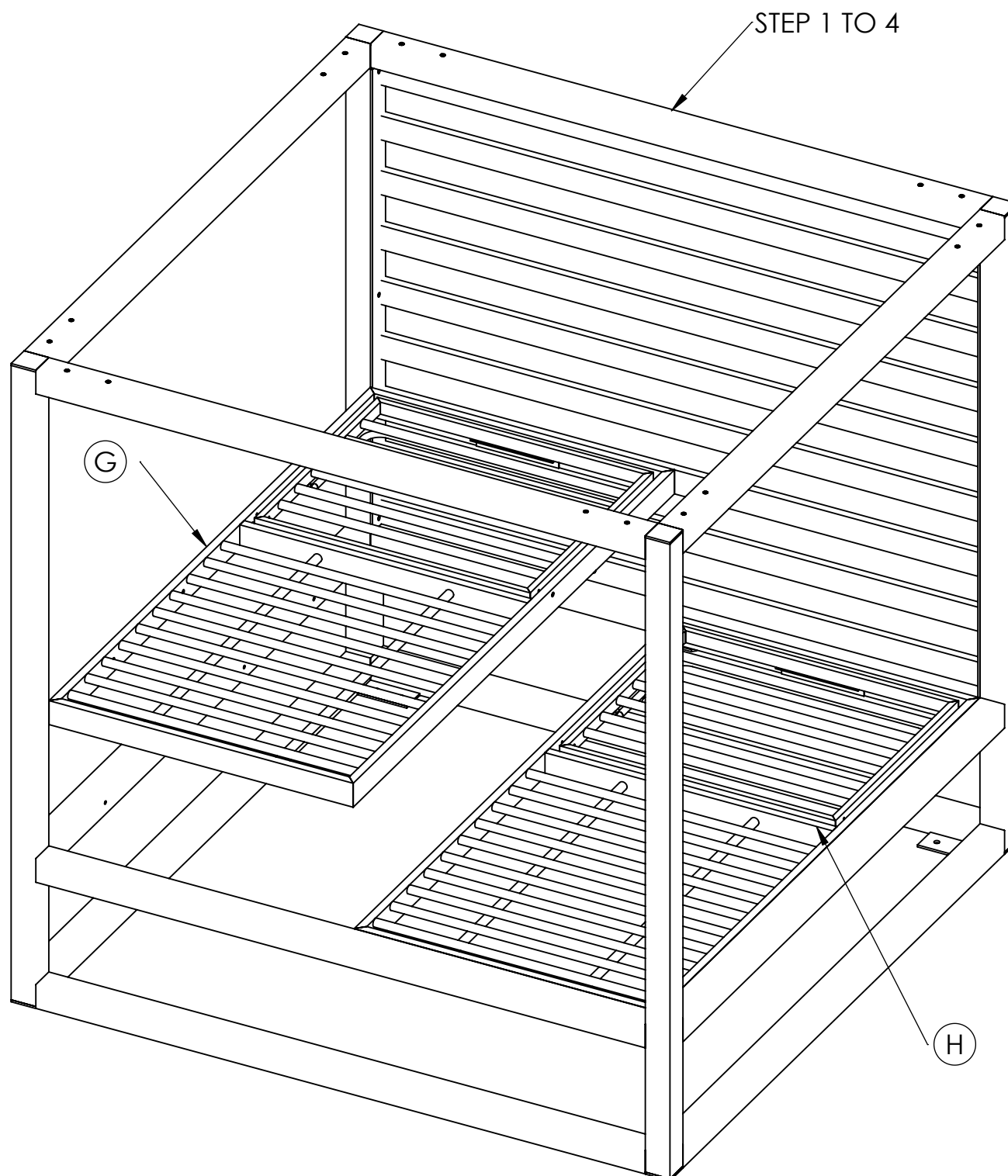


STEP 4

- ATTACH FRONT WALL WITH FLAT HEAD SCREW 1/4"-20 X 1" AND TIGHTEN. (AS SHOWN)



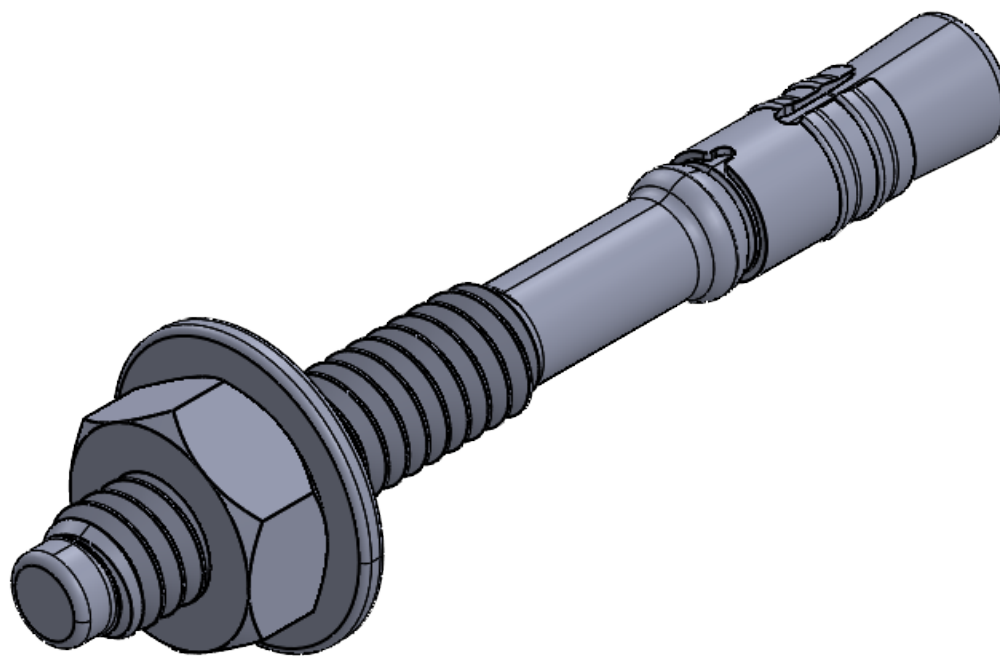
INSTALLATION MANUAL BREEZE DAYBED (SF-3406-202 IM)



STEP 5

- ATTACH BED FRAME WITH BOTTON HEAD HEX SCREW 1/4"-20 X 3/4" Lg AND WASHER 1/4"-20 AND TIGHTEN.
- ATTACH BED FRAME TO SIDE RAILS WITH BOTTON HEAD HEX SCREW 1/4"-20 X 1" LG

**SOURCE FURNITURE RECOMMENDED ANCHOR:
RED HED WEDGE ANCHOR,
2-1/4" OVERALL LG, 1/4" DIA, 1/4-20 THREAD SIZE**



PART NUMBER: 15X085
MFR MODEL: SWW-1422

NOTE: (4) REQUIRED PER LEG.
WEDGE ANCHOR NOT SUPPLIED BY SOURCE FURNITURE.
INSTALLER MUST VERIFY LOCAL AND STATE REQUIREMENTS
OF WEDGE ANCHOR BEFORE INSTALLATION.